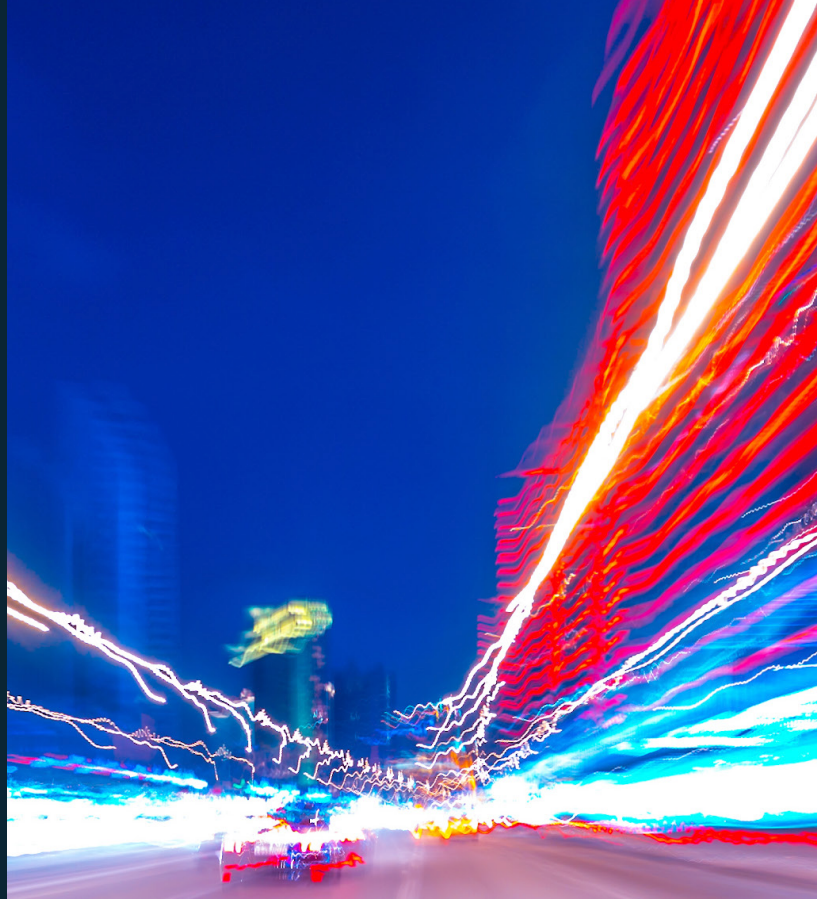




Another excellent course delivered
by Mpirical.



Watch our course intro video.



LTE Protocols

Course Description

If you are involved in the troubleshooting of LTE networks, you will appreciate that having a good understanding of the protocols is critical. This course therefore sets out to provide a detailed explanation of the LTE protocols that can be found within the E-UTRA, E-UTRAN and EPC. Furthermore, to enhance the explanations, the course incorporates real use cases and examples through the use of Mpirical's NetX virtual network analyzer.

Prerequisites: LTE System Engineering, or equivalent knowledge.

9

Hours Learning
(OnlineAnytime)

9

**CPD Learning
Credits**



**Level: 3
(Advanced)**

This course will contain the following sections:

1. RRC

Topic areas covered include:

- Introduction to RRC:
 - Air Interface Protocol Stack.
 - RRC States.
 - RRC Connection.
- E-UTRA Radio Bearers:
 - Signalling Radio Bearers:
 - SRB.
 - Dedicated Radio Bearers:
 - DRB.
- System Information:
 - SI Messages:
 - MIB, SIB1, System Information Types.
- RRC Connection Reconfiguration.
- LTE Mobility:
 - E-UTRA Measurements.
 - LTE Events.
 - Handover Process.
 - Inter-RAT Mobility.

2. X2AP

Topic areas covered include:

- Introduction to X2AP.
- Architecture of the X2 Application Part:
 - Functions of the X2 Application Protocol.
- X2 Procedures:
 - X2 Basic Mobility Procedures - Handover Preparation.
 - SN Status Transfer.

X2AP (cont.)

- UE Context Release.
- 3Handover Cancel.
- X2 Load Indication.
- X2 Resource Status Reporting.
- X2 Setup.
- X2 eNB Configuration.

3. S1AP

Topic areas covered include:

- Introduction to S1AP.
- The E-UTRAN Control Plane:
 - E-UTRAN Protocol Specifications.
- The E-UTRAN S1 Application Protocol.
- S1 Functions and Procedures.
- Example S1 Procedures:
 - NAS Transport.
 - Initial Context Setup.
 - E-RAB Establishment.
 - S1 Setup.
 - eNB and MME Configuration Update.
 - Handover.
 - Path Switch.
 - Status Transfer.
 - UE Context Release.
 - Reset.
 - S1 Trace Procedures.
 - Location Reporting Control.
 - Overload.
 - Paging.

9

Hours Learning
(OnlineAnytime)

9

CPD Learning
Credits



OnlineAnytime

4. GTP

Topic areas covered include:

- GTP Fundamentals.
- GTPv1-U:
 - GTPv1-U Header.
 - GTPv1-U Procedures.
- GTPv2-C:
 - GTPv2-C Header.
 - GTPv2 Message Format.

5. Diameter

Topic areas covered include:

- Diameter Protocol and Architecture:
 - Transporting Diameter Signalling.
 - 3GPP Diameter Interfaces.
 - Diameter Routing Agent:
 - DRA Specifics.
- Diameter Base Protocol & AVPs:
 - Command Codes.
 - Example Message - CCR and CCA.
- Diameter Routing and Roaming.

6. SGsAP

Topic areas covered include:

- Introduction to SGsAP:
 - Circuit Switched Fallback;
 - CSFB Operation.
- SGsAP Fundamentals:
 - SGsAP Protocol Stack.
 - SGsAP States.
 - SGsAP Message Set.
- Examining SGsAP:
 - Combined Attach.
 - Mobile Terminated Call Procedure.
 - CSFB MT SMS Procedure.
 - Combined TA/LA Update.
 - CSFB Network Detach.

7. NAS EMM

Topic areas covered include:

- Introduction to NAS EMM:
 - Stratum.
 - NAS Messages.
- EMM and ECM States:
 - EPS Mobility Management States.
 - EPS Connection Management States.
- NAS EMM Capabilities.
- NAS EMM and the EPS Attach:
 - Attach Request.
 - Identity Request.
 - Authentication Request and Response.
 - Security Context Initiation.
 - Attach Accept.
 - Attach Complete.

8. NAS ESM

Topic areas covered include:

- Introduction to NAS ESM:
 - Stratum.
 - NAS Messages.
 -
- EPS Session Management.
- ESM Message Detail:
 - PDN Connectivity Request.
 - Activate Default EPS Bearer Context Request.
 - Activate Dedicated EPS Bearer Context Request.



**Watch a Sample
Video Online**



ENTERPRISE

Need to train a large group?

mpirical.com/enterprise



TEAM

Training for a team?

mpirical.com/team-training



INDIVIDUAL

Looking for yourself?

mpirical.com/individual-training

Managed Learning Services

As part of our managed learning service we can offer you and your organisation a full range of services including:

mpirical.com/about-us/managed-learning-services

- Bespoke content and courseware development
- Product specific training packages, including product updates
- Dedicated trainers to understand your products and training requirements
- Managed training delivery services – administrative aspects including scheduling and liaison
- Customizable learning management system
- Traditional classroom, virtual classroom or video based online learning options

NetX

The Mpirical Network Visualisation Solution: **NetX Bringing Telecoms to Life!**
Imagine the benefits of having an entire mobile network available from your desktop.

- Where you can view a complete network map.
- Watch call flows across the network.
- Investigate network procedures.

NetX does this... and even more with our NetX customization options!
NetX is not just a learning aid, it is a valuable resource in the day to day activities of any telecoms professional and has been spotlighted as such by the 3GPP.

Explore NetX further at www.mpirical.com/netx



+44(0)1524 844669



enquiries@mpirical.com

www.mpirical.com