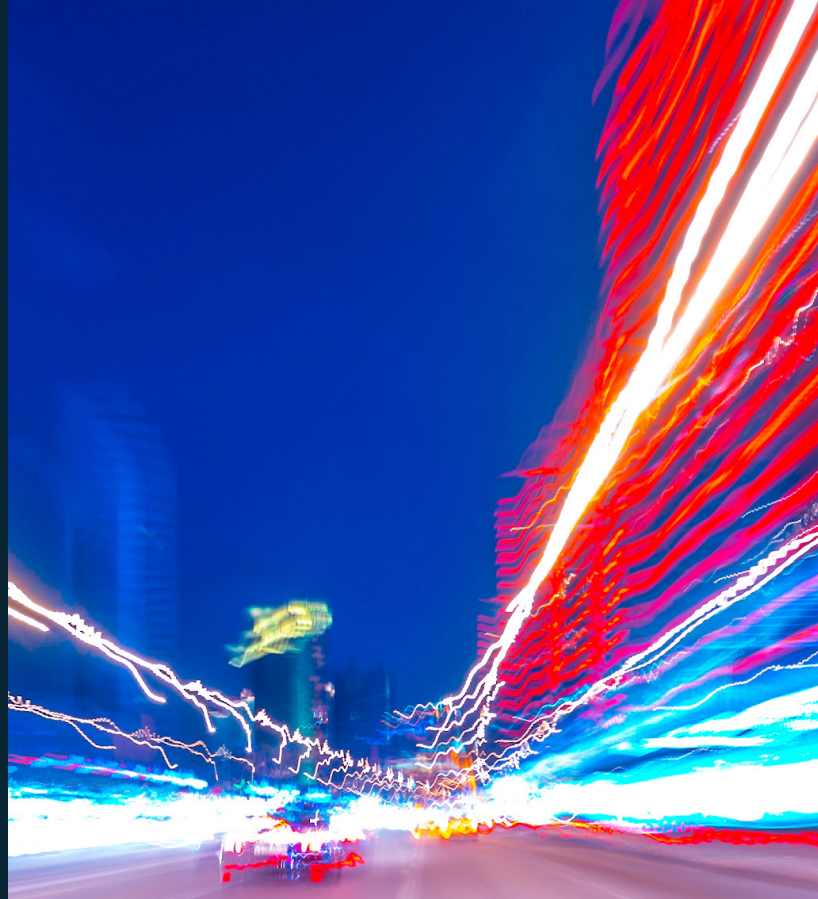




Superb as always.  
Thanks very much.



Watch our course intro video.



# Introduction to VoLTE

## Course Description

As IMS based VoLTE becomes the prevalent voice service enabler for 4G, this short course is designed to introduce the main concepts behind today's VoLTE networks. VoLTE will be considered on an end to end basis, with focus on the architecture required, as well as key aspects such as initial procedures, call establishment and interworking.

This course has no prerequisites.

**1/2** day  
(LiveOnsite,  
LiveOnline)

**3** hours  
learning  
(OnlineAnytime)

**3**

CPD Learning  
Credits



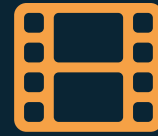
Level: 1  
(Beginner)

**This course will contain the following sections:**

## **1. Introduction to VoLTE**

### **Topic areas covered include:**

- VoLTE Concepts and Drivers:
  - VoLTE Standardization.
- VoLTE End to End Architecture:
  - LTE Access Network.
  - IP Multimedia Subsystem.
  - Policy and Charging Control.
- VoLTE Initial Procedures:
  - Subscriber Provisioning.
  - Establishing IMS Connectivity.
  - IMS Registration.
  - Post Registration.
- VoLTE Call Procedures:
  - SIP Signalling Exchange.
  - Establishing Dedicated Bearers.
  - Tearing Down the Call.
- Interworking:
  - Interworking with Legacy Voice Networks.
  - Handing Over to 2G/3G (SR-VCC).
  - Wi-Fi Calling.



**Watch a Sample  
Video Online**

**1/2** day  
(LiveOnsite,  
LiveOnline)

**3** hours  
learning  
(OnlineAnytime)

**ITP**

**ITP accredited  
course**



**LiveOnsite, LiveOnline,  
OnlineAnytime**



## ENTERPRISE

Need to train a large group?

[mpirical.com/enterprise](http://mpirical.com/enterprise)



## TEAM

Training for a team?

[mpirical.com/team-training](http://mpirical.com/team-training)



## INDIVIDUAL

Looking for yourself?

[mpirical.com/individual-training](http://mpirical.com/individual-training)

## Managed Learning Services

As part of our managed learning service we can offer you and your organisation a full range of services including:

[mpirical.com/about-us/managed-learning-services](http://mpirical.com/about-us/managed-learning-services)

- Bespoke content and courseware development.
- Product specific training packages, including product updates.
- Dedicated trainers to understand your products and training requirements.
- Managed training delivery services – administrative aspects including scheduling and liaison.
- Customizable learning management system.
- Traditional classroom, virtual classroom or video based online learning options.

# NetX

The Mpirical Network Visualisation Solution: **NetX Bringing Telecoms to Life!**  
Imagine the benefits of having an entire mobile network available from your desktop.

- Where you can view a complete network map.
- Watch call flows across the network.
- Investigate network procedures.

NetX does this... and even more with our NetX customization options!  
NetX is not just a learning aid, it is a valuable resource in the day to day activities of any telecoms professional and has been spotlighted as such by the 3GPP.

Explore NetX further at [www.mpirical.com/netx](http://www.mpirical.com/netx)



+44(0)1524 844669



[enquiries@mpirical.com](mailto:enquiries@mpirical.com)

[www.mpirical.com](http://www.mpirical.com)